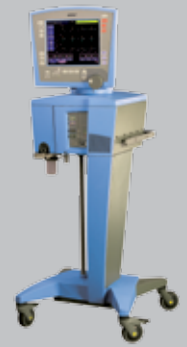


Critical care ventilation

AVEA® nasal CPAP specifications

Gentle support for delicate patients

AVEA® nasal CPAP offers uncompromised pressure accuracy and flow stability for safe and effective treatment. Designed to operate with standard circuits and a variety of common nasal prongs, AVEA® nasal CPAP can be seamlessly integrated into your nursery.



Specifications

nCPAP	
Range	H ₂ O
Resolution	1 cmH ₂ O
Default	2 cmH ₂ O
nCPAP flow	Flow delivery is under software control and limited to a maximum of 15 LPM

Approved interfaces

HUDSON infant nasal CPAP cannula	Sizes 0 through 4. Hudson RCI, Research Triangle, NC
INCA® infant nasal cannula	Sizes 7.5F, 9F, 10.5F, 12F, 15F CooperSurgical, Inc., Trumbull, CT
NEOTECH binasal airway	Sizes 3.0 mm, 3.5 mm, 4.0 mm NEOTECH Products, Inc., Valencia, CA
ARGYLE® infant nasal cannula	Sizes extra-small, small, large Sherwood Medical, St. Louis, MO

Ordering information

AVEA® nasal CPAP is an upgradeable option to any existing AVEA® ventilator

Description	Part number
AVEA® nasal CPAP option	16475

Graphics

All existing waves will be maintained except for the volume (Vt) wave will be removed and the loops selection button will be disabled.

Displayed waves

Net flow (flow)
Inspiratory flow/CPAP flow (F _{insp})
Expiratory flow (F _{exp})
Airway pressure/CPAP level (P _{AW})
Inspiratory pressure (P _{insp})

Monitors

The following monitors have been added for nasal CPAP

CPAP level (mean airway pressure)
CPAP flow (mean inspiratory flow)

Automatic alarm thresholds

High nCPAP pressure	Set nCPAP level + 3 cmH ₂ O (or pressure limit)
Low nCPAP pressure	Set nCPAP level -2 cmH ₂ O (or -1 cmH ₂ O if setting would result in less than 0)
nCPAP pressure limit	11 cmH ₂ O

 **WARNING:** U.S. Federal Law restricts this device to sale by or on the order of a physician.

 CareFusion
22745 Savi Ranch Parkway
Yorba Linda, CA 92887

Toll-Free: 800.231.2466
Phone: 714.283.2228
Fax: 714.283.8493



CareFusion Germany GmbH 234
Leibnizstrasse 7
D-97204 Hoechberg
Germany

Phone: 49.0.931.4972.0
Fax: 49.0.931.4972.423

© 2010 CareFusion Corporation or one of its subsidiaries. All rights reserved. AVEA is a registered trademark of CareFusion Corporation or one of its subsidiaries. All other trademarks are property of their respective owners. RC0701 L3143 Rev B (0510/4000)

CareFusion
Yorba Linda, CA

carefusion.com

